

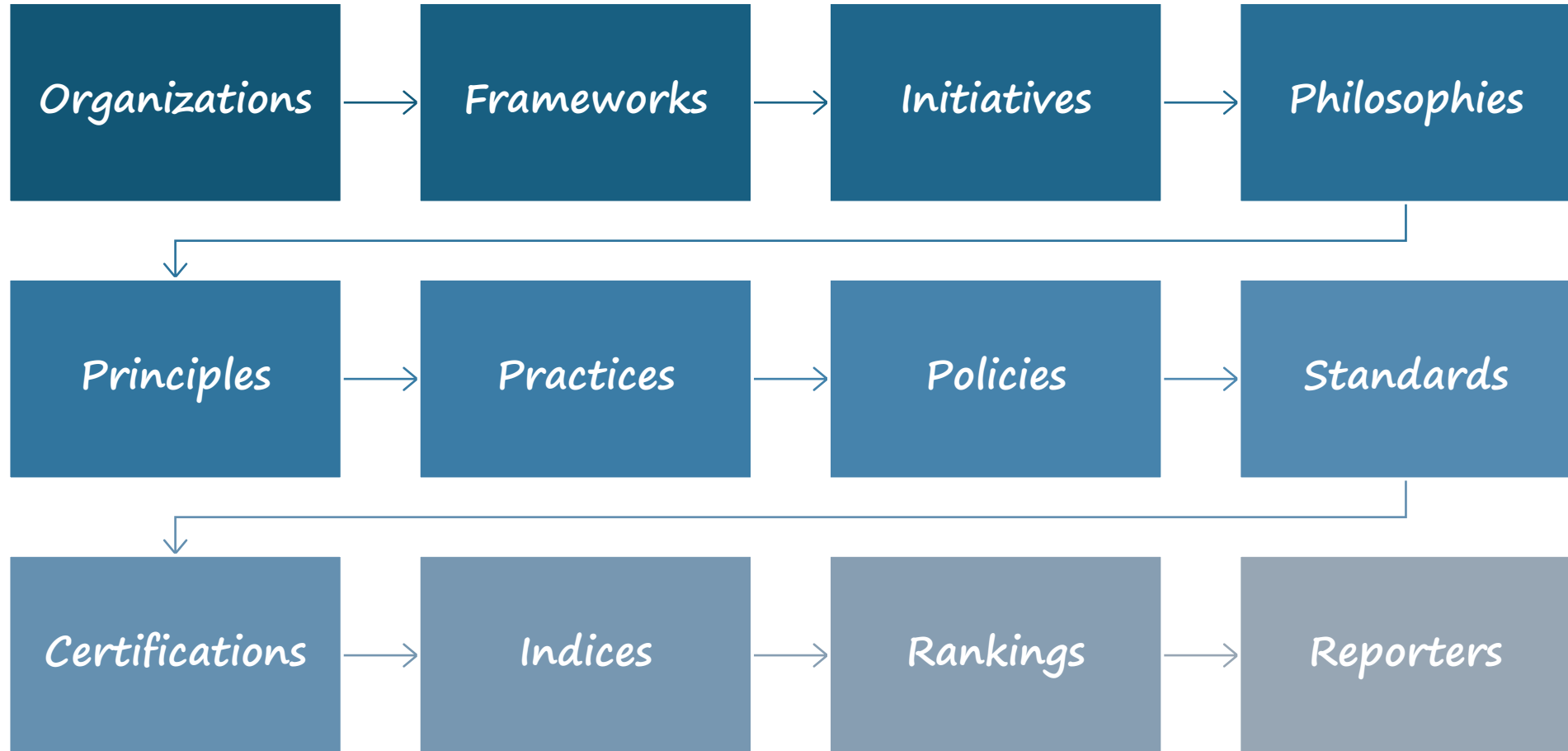
ISO 26000

in relation to other social
responsibility and
sustainability standards and
frameworks

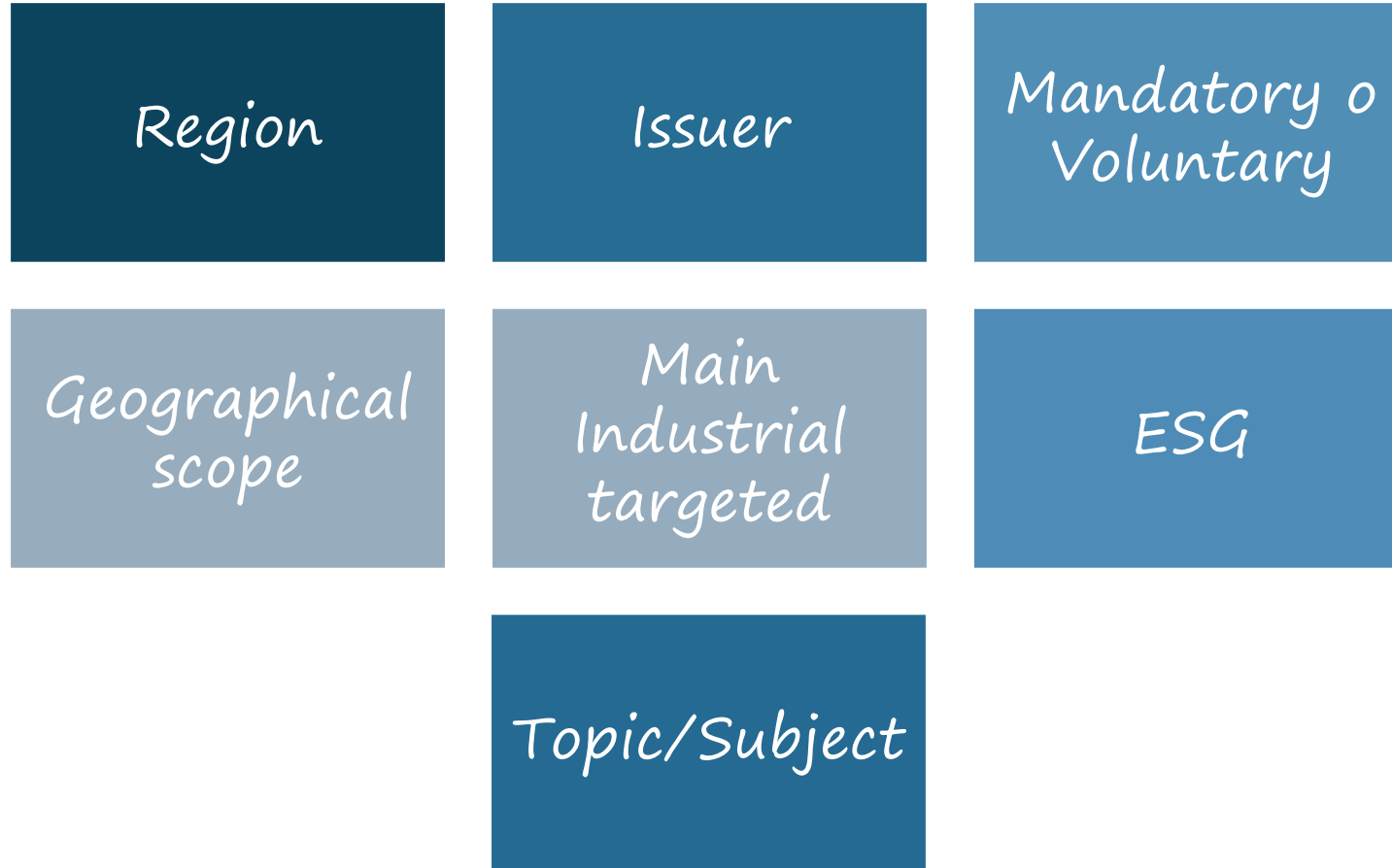
Lucía Natale

Vice Chair ISO 26000 SGN 5

The Sustainability screen



Sustainability filters



Filters

Region ^

Issuer ^

Issuer type ^

Mandatory or voluntary ^

Geographical scope ^

Main industries targeted ^

ESG ^

Reset filters

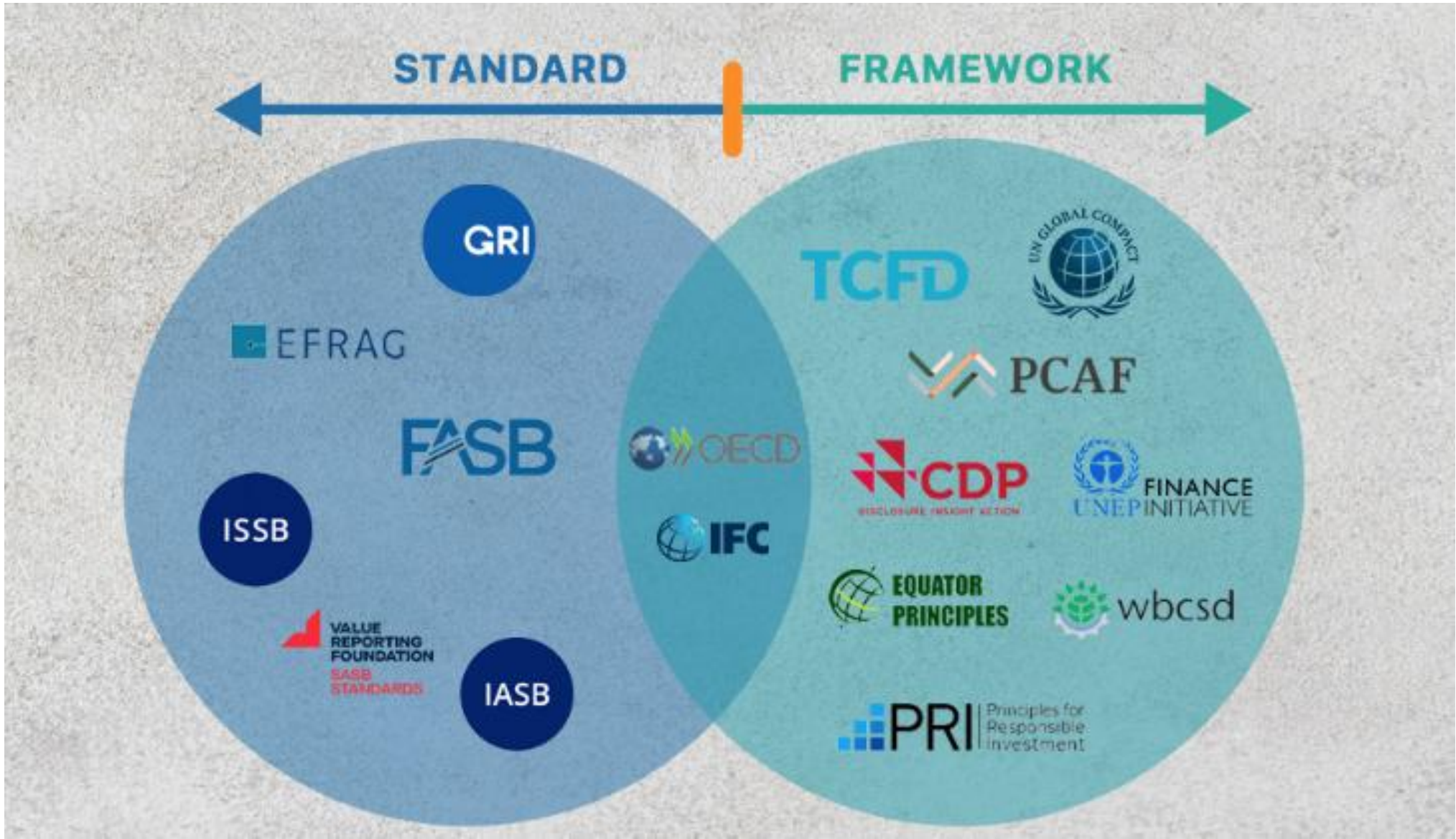
Principal Sustainability Tools

FRAMEWORKS

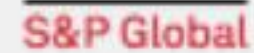
STANDARDS

CERTIFICATIONS

INDICES,
RANKINGS,
AND
METRICS



RANKERS & RATERS



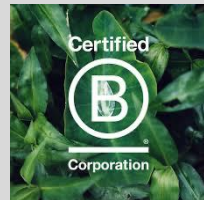
[gri-perspective-esg-standards-frameworks.pdf](#)

CERTIFICACIONES

Certified



Corporation



Certificaciones de tipo I



Certificaciones de tipo II



Certificaciones de tipo III

Frameworks

- Organisations use frameworks to guide their strategies and practices or how to report.
- For example:
 - UN Global compact
 - TCFD

- ISO 26000 gives examples of different frameworks and provides an understanding of their use in the organization

Standards (reporting)

- Refers to a set of guidelines, principles, established by a recognised authority.
- They provide specific instructions on how to report, including

- ISO 26000 explains the main characteristics of Communication of Information relating to social responsibility

Certification

- Awarded by a third party after an assessment.
 - An example of this, is B Corps. Certification is given based on criteria that the third-party organization has
- gri-perspective-esg-standards-
www.bcorporation.net

- ISO 26000, explain some initiative that are Certifiable.
- Annex A include Some (but not all) of the initiatives for social responsibility listed in possibility of certification against the initiative by independent third parties.

NEW STANDARDS ISO

ISO/TC 323
Circular economy

← Technical Committees

About

Secretariat: **AFNOR**
Committee Manager: **Mme Mélissa De Medeiros**

Chairperson (until end 2025): Mrs Catherine Chevauche

ISO Technical Programme Manager [TPM]: **Ms Monja Kortner**
ISO Editorial Manager [EM]: **Ms Nicola Perou**

Creation date: 2018

Quick links

- Work programme**
Drafts and new work items
- Business plans**
TC Business plans for public review
- Working area**
Working documents (user account required)

ISO/PC 343
Sustainable development goals management

← Technical Committees

About

Secretariat: **DS**
Committee Manager: **Mr Kasper Hillgaard Mühlbach**

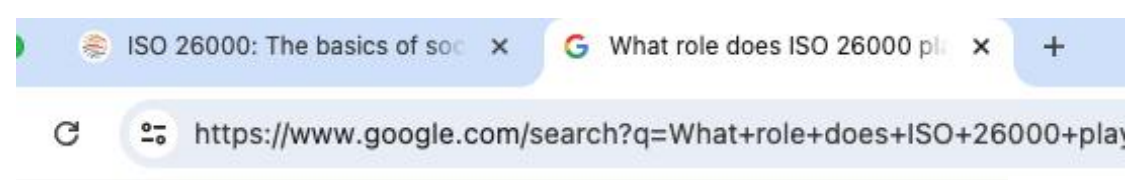
Chairperson (until end 2028): Mr Jacob Færgemand

ISO Technical Programme Manager [TPM]:
Ms Sally Swingewood
ISO Editorial Manager [EM]: **Ms Isabel Veronica Nelson**

Creation date: 2023

Quick links

- Work programme**
Drafts and new work items
- Business plans**
TC Business plans for public review
- Working area**
Working documents (user account required)



What role does ISO 26000 play in CSR?

In addition to promoting a common understanding of social responsibility, ISO 26000 supports organisations in their sustainable development approach by helping them identify their social responsibility and stakeholders, as well as understand how to facilitate dialogue with them. 02/05/2024

This International Standard is intended to assist organizations in contributing to sustainable development.

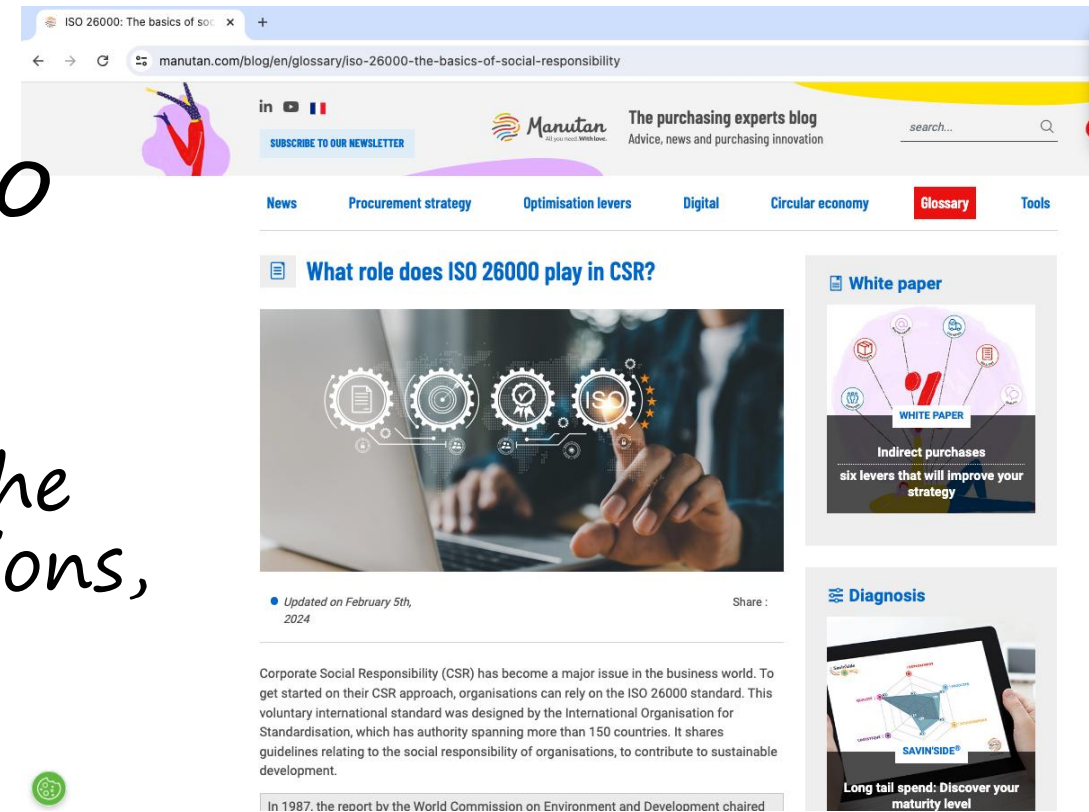
It is intended to promote common understanding in the field of social responsibility, and to complement other instruments and initiatives for social responsibility, not to replace them.

What role does ISO 26000 play in CSR?

- Corporate Social Responsibility (CSR) has become a major issue in the business world.

...organisations can rely on the ISO 26000 standard...

- It shares guidelines relating to the social responsibility of organisations, to contribute to sustainable development.



The screenshot shows a web browser displaying a blog post from Manutan. The URL is [manutan.com/blog/en/glossary/iso-26000-the-basics-of-social-responsibility](https://www.manutan.com/blog/en/glossary/iso-26000-the-basics-of-social-responsibility). The page features a navigation menu with categories like News, Procurement strategy, Optimisation levers, Digital, Circular economy, Glossary, and Tools. The main content area has a title 'What role does ISO 26000 play in CSR?' and a sub-header 'White paper'. Below the title is a large image of a person's hand pointing at a laptop screen with various icons. The text below the image states: 'Corporate Social Responsibility (CSR) has become a major issue in the business world. To get started on their CSR approach, organisations can rely on the ISO 26000 standard. This voluntary international standard was designed by the International Organisation for Standardisation, which has authority spanning more than 150 countries. It shares guidelines relating to the social responsibility of organisations, to contribute to sustainable development.' There is also a small green circular icon with a leaf symbol.

• <https://www.manutan.com/blog/en/glossary/iso-26000-the-basics-of-social-responsibility>

Source:
www.manutan.org

The Sustainability Soup

C	S	R	D	E	S	G	S
S	D	G	E	S	G	G	R
I	I	I	R	C	T	C	F
D	S	A	S	B	I	F	R
S	E	F	R	A	G	I	S

The Sustainability Soup

ISO

26000



Thanks
